



To SAI Subcommittee
Global Aircraft Tracking (GAT)
Working Group

Date June 20, 2017

From Peter Grau
Peter.Grau@sae-itc.org
tel: 1-240-334-2580

Reference 17-999/SMA-014 lth

Subject **Meeting Announcement**
Global Aircraft Tracking (GAT) Working Group

Chairman **Chuck Adler, Boeing (Charles.O.Adler@Boeing.com)**

When **August 16-18, 2017**
Wednesday and Thursday from 0900 to 1700
Friday from 0900 to 1300

Host **Boeing**

Where **Boeing Longacres Facility**
Building 25-01
1301 SW 16th Street
Renton, Washington 98055
Point of Contact:
Chuck Adler, Boeing
Charles.O.Adler@Boeing.com

Security: Boeing Longacres is a secure facility. Meeting participants must provide the following information to Chuck Adler before **July 31, 2017**:

- Last Name, First Name, Middle Initial
- Company Represented
- Country of Citizenship

To expedite the security process and enable your access to the meeting facility, please register your intent to attend as provided in the "Instructions" portion of this announcement. You will need to provide a photo ID on site (government issued for US persons, passports otherwise).

Travel information is provided later in this AEEC meeting announcement.

Hotels There is a good selection of hotels available near the meeting site to suit your budget and comfort needs. A listing of the surrounding hotels who extend discounted rates to Boeing Training and Flight Services is attached to this announcement. It is recommended that you contact the hotel for specific rate information.

Instructions Please notify the Industry Activities staff of your intention to attend by registering online at: <http://www.aviation-ia.com/events/>

The meeting is open to all interested parties. Individuals requesting time on the agenda should contact Chuck Adler or Peter Grau. The agenda will be finalized one week prior to the meeting.

Meeting Objectives **Global Aircraft Tracking Standards**

The AEEC has formed the Global Aircraft Tracking (GAT) Working Group to prepare standards applicable to the ICAO Global Aeronautical Distress and Safety System (GADSS). The APIMs are as follows:

APIM 17-004 – Autonomous Distress Tracking (ADT)

APIM 17-005 – Timely Recovery of Flight Data (TRFD)

Several technologies may contribute to positive aircraft tracking. This includes ground-based ADS-B, space-based ADS-B, datalink services, and others. The goal is to propose solutions that can positively identify and track an aircraft with minimal impact on aircraft production and retrofit.

ICAO Global Aeronautical Distress & Safety System (GADSS)

ICAO SARPS will require GADSS on certain production aircraft with a gross weight greater than 27,000 kg.

- Normal Tracking – All flight phases – 15-minute interval
- Autonomous Distress Tracking – 1 Minute interval

Technologies for consideration include Mode S, ADS-B, ADS-C, including space-based Datalink technologies, VHF, and Satcom.

APIM 17-004 – Autonomous Distress Tracking (ADT)

The goal is to define system requirements, equipment architectures and aircraft installation standards for equipment capable of meeting ICAO GADSS requirements potentially including:

- Satcom-based tracker
- Space-based Automatic Dependent Surveillance – Broadcast (ADS-B)
- Fixed Emergency Locator Transmitter – Distress Tracker (ELT-DT)

Airlines are expected to benefit by being able to meet the forthcoming worldwide Autonomous Distress Tracking mandates in the most effective manner possible. The goal is to reach consensus on a strawman requirements document.

APIM 17-005 – Timely Recovery of Flight Data (TRFD)

Future work on APIM 17-005 is anticipated as part of the overall work package. Following the ADT activity, the Global Aircraft Tracking Working Group is expected to define system requirements, equipment architectures and aircraft installation standards for equipment capable of meeting ICAO TRFD requirements potentially including:

- Automatic Deployable Flight Recorder (ADFR) installed on the aircraft which is capable of automatically deploying from the aircraft
- Flight Data Streaming (FDS) – the ability to stream flight data from the airplane while in flight

Preliminary discussions will take place. Airlines are expected to benefit by being able to meet the forthcoming worldwide TRFD mandates in the most effective manner possible.

Travel Information

Boeing Longacres

The Boeing meeting site is located about 10 miles from the Seattle Airport.

Depending on your hotel of choice, a courtesy shuttle from the airport to the hotel may be available. Please contact the hotel directly to inquire further.

Maps of the Boeing Longacres Industrial Park are attached to this meeting announcement.

A rental car is recommended.

Attachments Hotel List and Maps

Attachment 1

Seattle Boeing Training & Flight Services / Hotel Listing

Please contact the hotel directly to obtain current reduced rates for the
Boeing Training & Flight Services (BTFS)

Hotel / Phone – Fax - Web
Best Western River's Edge 15901 W. Valley Highway Tukwila WA 98188 425-226-1812 / 425-255-7856 Fax www.bestwestern.com/southcenter
Clarion Hotel 3700 East Valley Rd Renton, WA 98055 425-251-9591 / 425-251-0340 Fax www.clarionhotels.com/hotel/wa199
Courtyard by Marriott SEATAC 16038 West Valley Hwy Tukwila, WA 98188 425-255-0300 / 425-204-4975 Fax www.marriott.com/seawv
Courtyard by Marriott Southcenter 400 Andover Park West Tukwila, WA 98188 206-575-2500 / 206-575-0129 Fax www.marriott.com/seasc
Doubletree Suites (Hilton) 16500 Southcenter Parkway Seattle, Wa. 98188 206-575-8220 / 206-575-4743 fax www.doubletree.hilton.com

Hotel / Phone – Fax - Web
Extended Stay Deluxe – Renton 1150 Oakesdale Ave SW Renton WA 98055 425-228-2454 / 425-228-2655 Fax www.extendedstay.com
Hampton Inn (Hilton) 7200 S 156 th Street Tukwila WA 98188 425-228-5800 / 425-228-6812 Fax www.hamptoninn.com
Hawthorne Suites 6329 South 212th Street Kent, WA 98032 253-395-3800 / 253-395-3022 Fax www.kenthawthorn.com
Hilton Garden Inn 1801 East Valley Hwy Renton, WA 98057 425-430-1414 / 425-430-8577 Fax www.seattlerenton.stayhgi.com
Holiday Inn - Renton One South Grady Way Renton, WA 98057 425-226-7700 / 425-271-2315 Fax www.holidayinn.com/rentonwa

Seattle Boeing Training & Flight Services / Hotel Listing

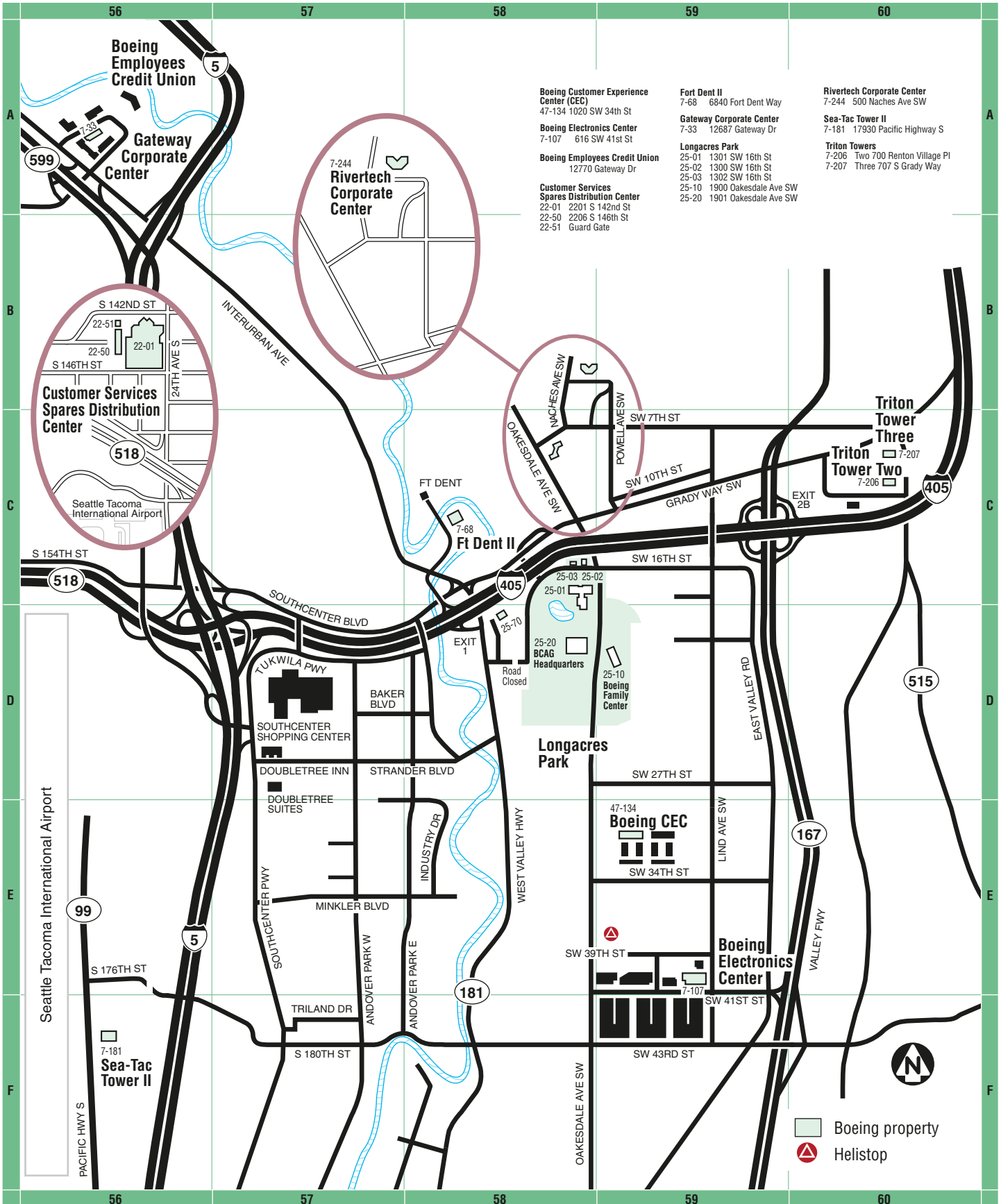
Please contact the hotel directly to obtain current reduced rates for the
Boeing Training & Flight Services (BTFS)

Hotel / Phone – Fax - Web
Homewood Suites (Hilton) 6955 Fort Dent Way Seattle, WA 98188 206-433-8000 / 206-433-8994 Fax www.homewoodsuites.hilton.com
Larkspur Landing 1701 East Valley Road Renton, WA 98055 425-235-1212 / 425-235-3616 Fax www.larkspurlanding.com
Residence Inn by Marriott 16201 West Valley Hwy Tukwila, Wa 98188 425-226-5500 / 425-271-5023 fax www.residenceinn.com
Springhill Suites – Renton Marriott 200 SW 19th Street Renton, WA 98055 425-226-4100 / 425-226-4191 Fax www.marriott.com/seasr
Sutton Suites – SEATAC 3423 160th Street Seattle WA 98188 206-431-6884 / 206-431-9181 Fax www.suttonsuites.com

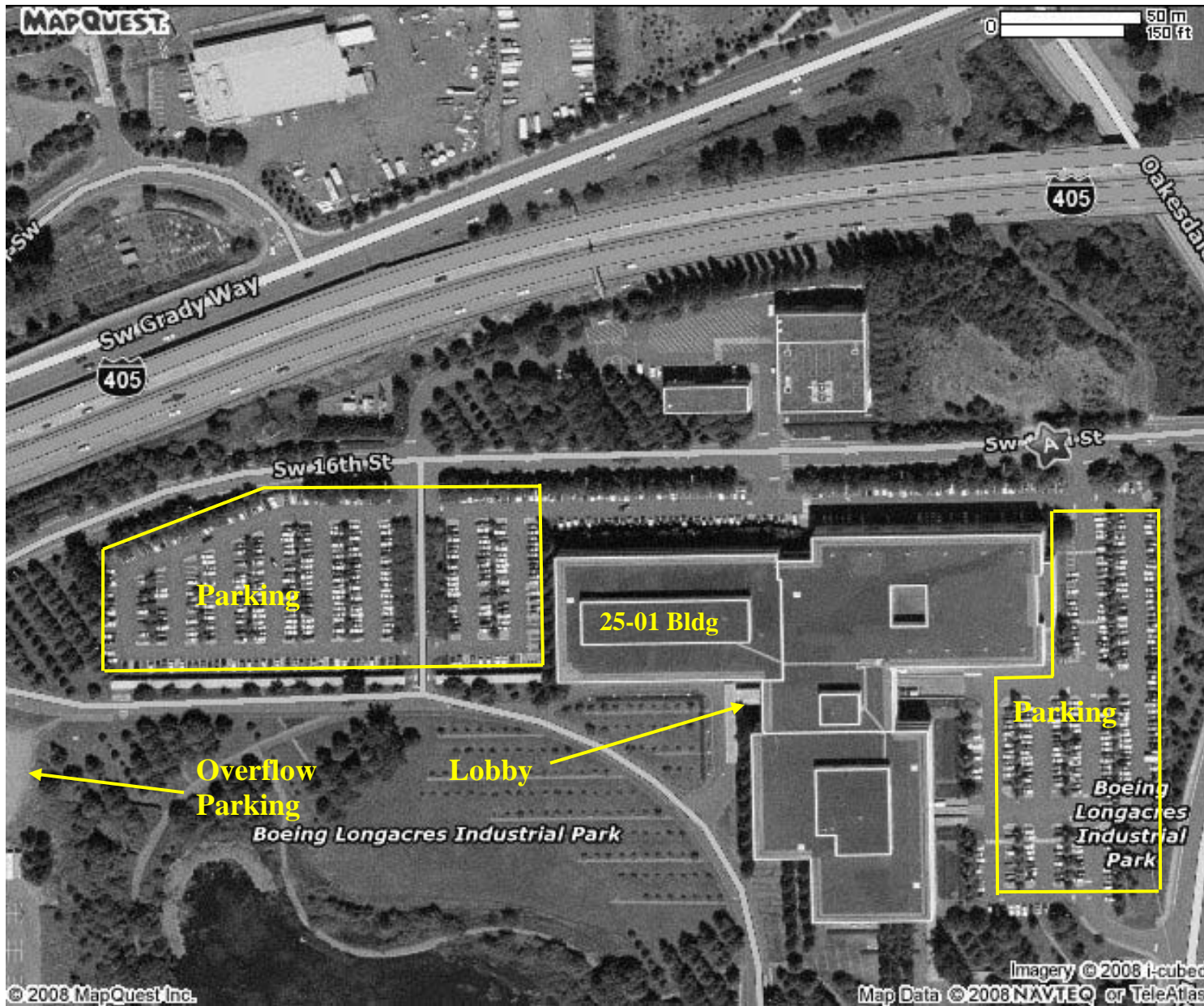
Hotel / Phone – Fax - Web
Towneplace Suites – Kent Marriott 18123 72nd Avenue South Kent, WA 98032 253-796-6000 / 253-796-6050 Fax www.marriott.com
Towneplace Suites – Renton Marriott 300 SW 19th Street Renton, WA 98055 425-917 2000 / 425-917-2002 Fax www.marriott.com/seatr

Attachment 2

Washington – Southcenter/Tukwila Area

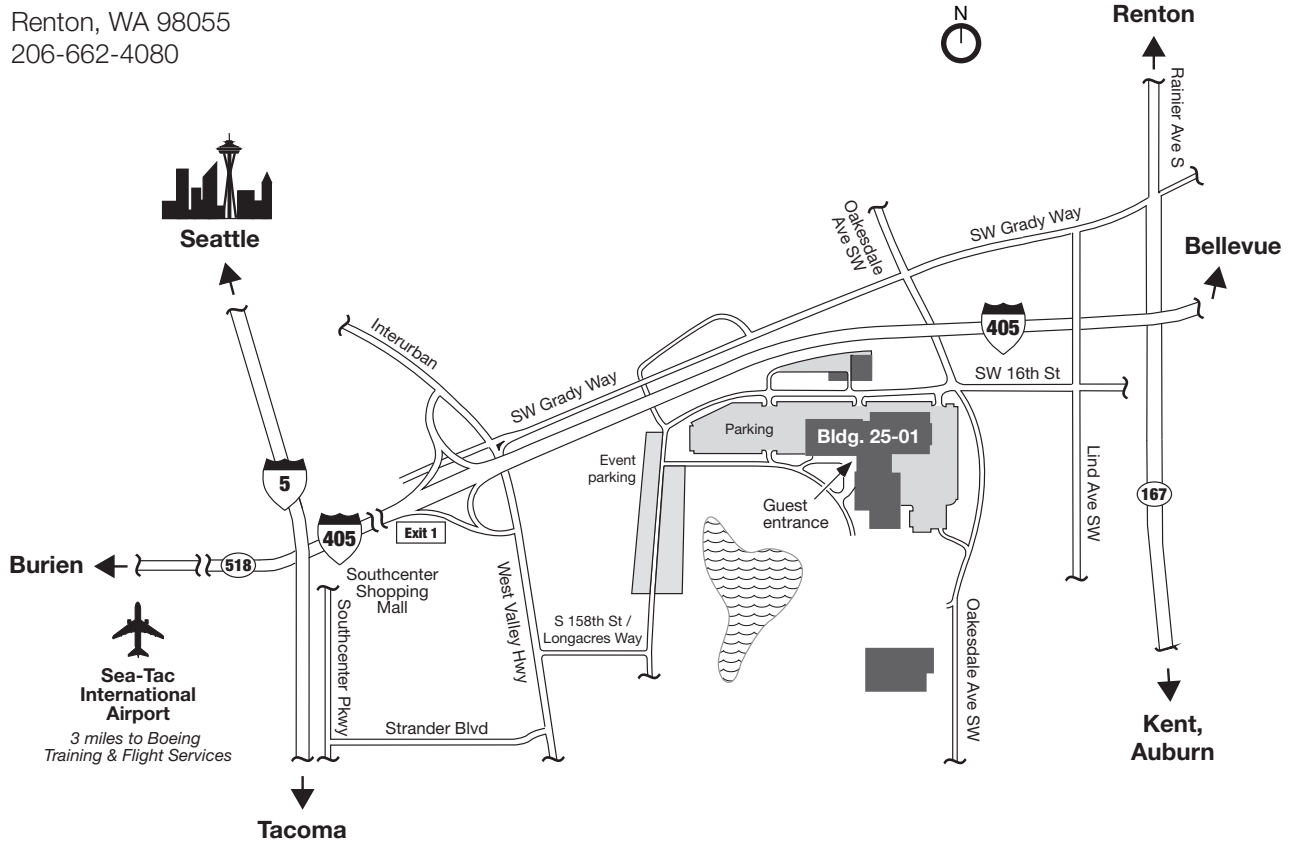


Boeing Longacres 25-01 Building, 1301 S.W. 16th St. Renton, WA 98055



Seattle Campus Area Map and Driving Instructions

Seattle Campus
 1301 S.W. 16th Street
 Renton, WA 98055
 206-662-4080



Traveling south on I-405 South

- Take Exit #1 (181 South, Tukwila, West Valley Highway)
- Right on Interurban
- Left on SW Grady Way
- Right on Oakesdale Avenue SW
- Right on SW 16th Street
- Left into parking lot

Traveling north or south on I-5

- Take Exit I-405 North
- Take Exit #1 (181 South, Tukwila, West Valley Highway)
- Left on West Valley Highway/ Interurban
- Right on SW Grady Way
- Right on Oakesdale Avenue SW
- Right on SW 16th Street
- Left into parking lot

From SeaTac Airport

- Follow green and white "To Freeways" signs
- Right on East 518 to I-405 North
- Continue on I-405 North (Renton, Bellevue)
- Take Exit #1 (181 South, Tukwila, West Valley Highway)
- Left on West Valley Highway/ Interurban
- Right on SW Grady Way
- Right on Oakesdale Avenue SW
- Right on SW 16th Street
- Left into parking lot